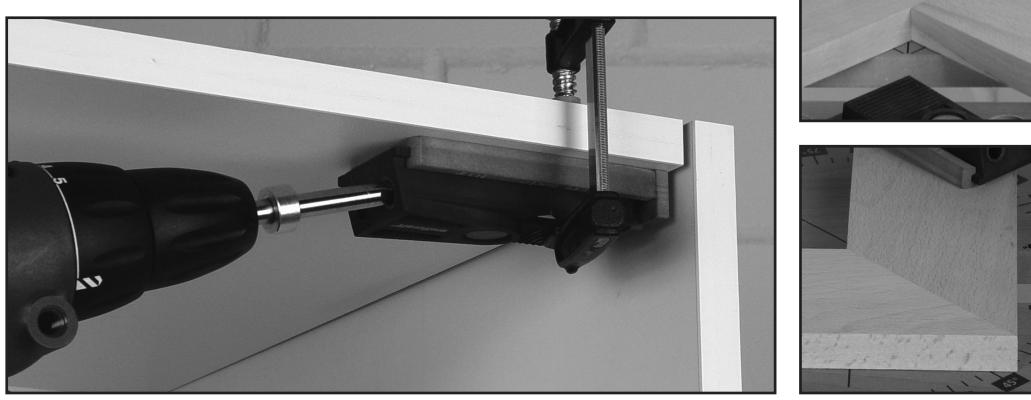


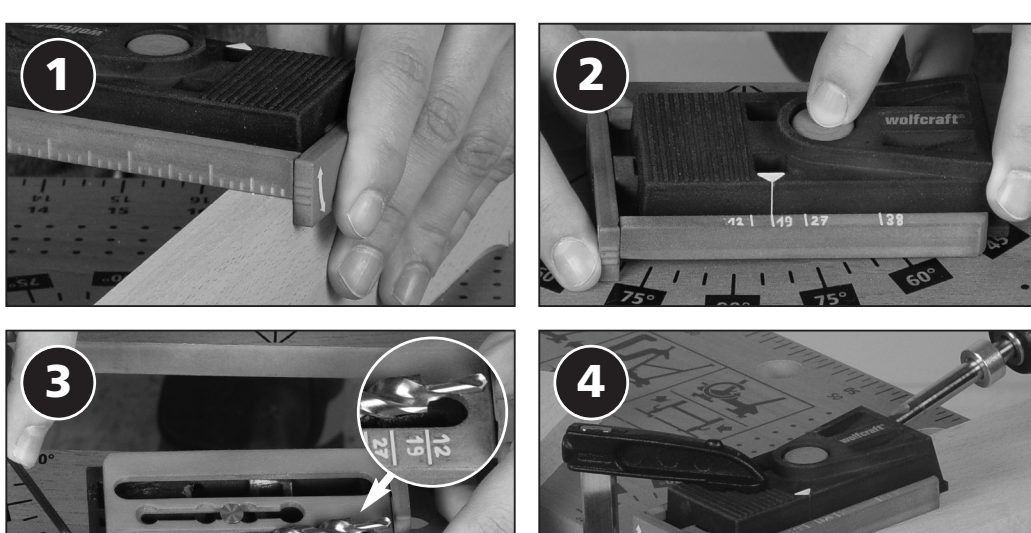
Undercover Jig



- Original-Bedienungsanleitung
Translation of the original operating instructions
Traduction de la notice d'utilisation originale
Traducción del manual de instrucciones original
Vertaling van de oorspronkelijke handleiding
Traduzione del manuale d'uso originale
Tradução do manual original
Översættelse af den originale betjeningsvejledning
Översättning av original bruksanvisningen
Ålvepsäringar käyttöönoton ohje
Översættelse av original bruksanvisning
Metacraft originalnej instrukcijski obklugi
Μεταφραση του πρωτότυπου οδηγίου χρήσης
Original isletim klavuzunun çevirisi
Preklad originálního návodu na obsluhu
Az eredeti használati útmutató fordítása
Traducerea instruciilor de operare originale
Превод на оригиналног уптване за употребу
Превод оригиналног уптства за употребу
Перевод оригинала инструкции по эксплуатации



wolffcraft GmbH
Wolffstraße 1
56746 Kempenich
Germany
www.wolffcraft.com



Contento: a) 1x maschera per foratura b) 1x caccavite
c) 1x punta speciale d) 1x restrito di profondità
e) 1x chiave a brugola
f) 10x tappi per la testa delle viti
g) 10 viti da legno per tipo, Ø 4 mm nelle lunghezze
25, 30, 40 e 60 mm

Table with 2 columns: Spessore del legno (wood thickness) and dimensione della vite (screw size) with various measurements.

Utensili necessari per il montaggio: morsetto, avvitatore oppure trapano.
Figura 2: Regolare la profondità di foratura...
Figura 3: Regolare la lunghezza delle file...

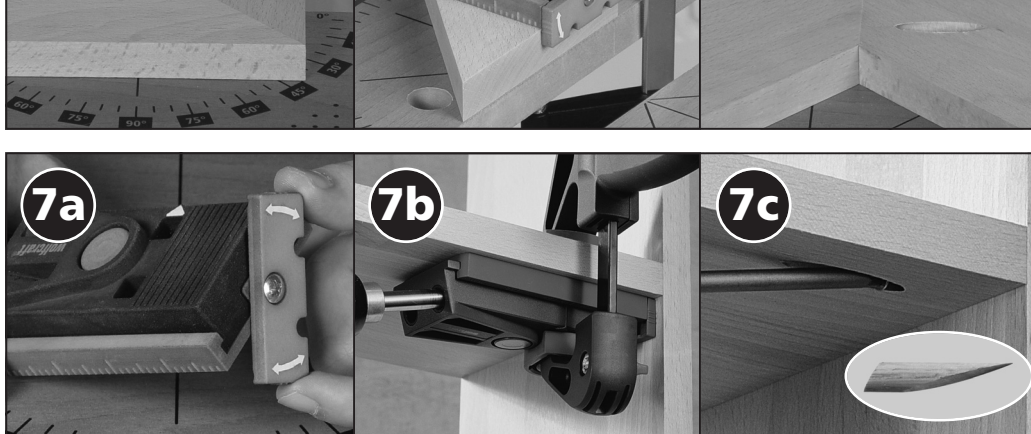


Figura 2a: Foratura
Figura 3a: Collegamenti angolari...



Bild 6a - 6c: Gehirgungsverbindungen
Bohrlehre einstellen (Bild 1-3)...
Bild 7a - 7c: Vormontierte Werkstücke/Reparaturarbeiten

Inhalt: a) 1x Bohrhöhre b) 1x Bütaufsatz c) 1x Stufenbohrer
d) 1x Tiefenstop e) 1x Inbusschlüssel SW 3
f) 10x Schraubkopfabdeckungen
g) 10x Holzschrauben, Ø 4 mm in den Längen
25, 30, 40 und 60 mm

Table with 2 columns: Holzstärke (wood thickness) and Schraubengröße (screw size) with various measurements.

Bedienungstext in German, including safety instructions and assembly steps for the Undercover Jig.

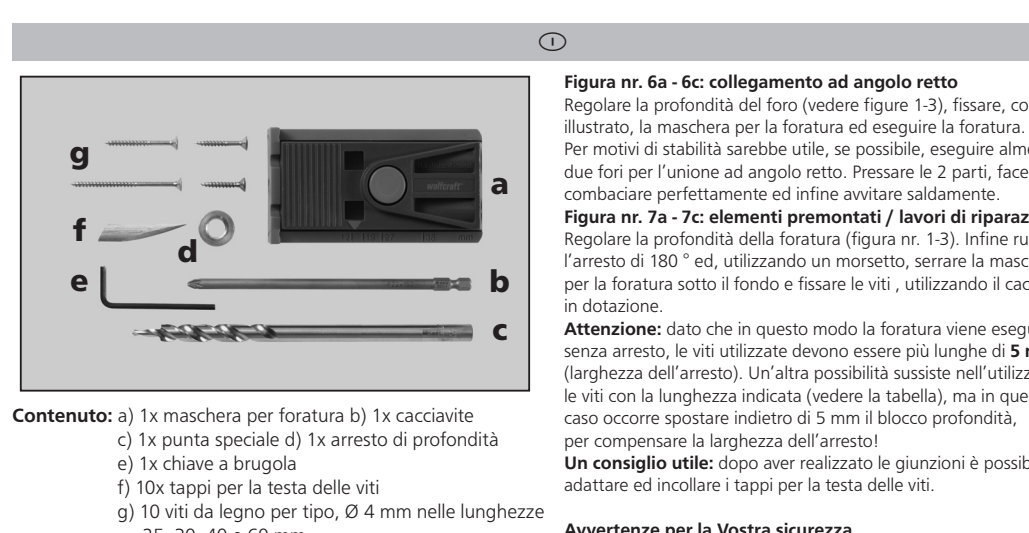


Figura 1: Preparare la posizione desiderata della maschera per forare...
Figura 2: Regolare la profondità di foratura...
Figura 3: Regolare la lunghezza delle file...

Figura 4: Foratura
Figura 5a: Collegamenti angolari...

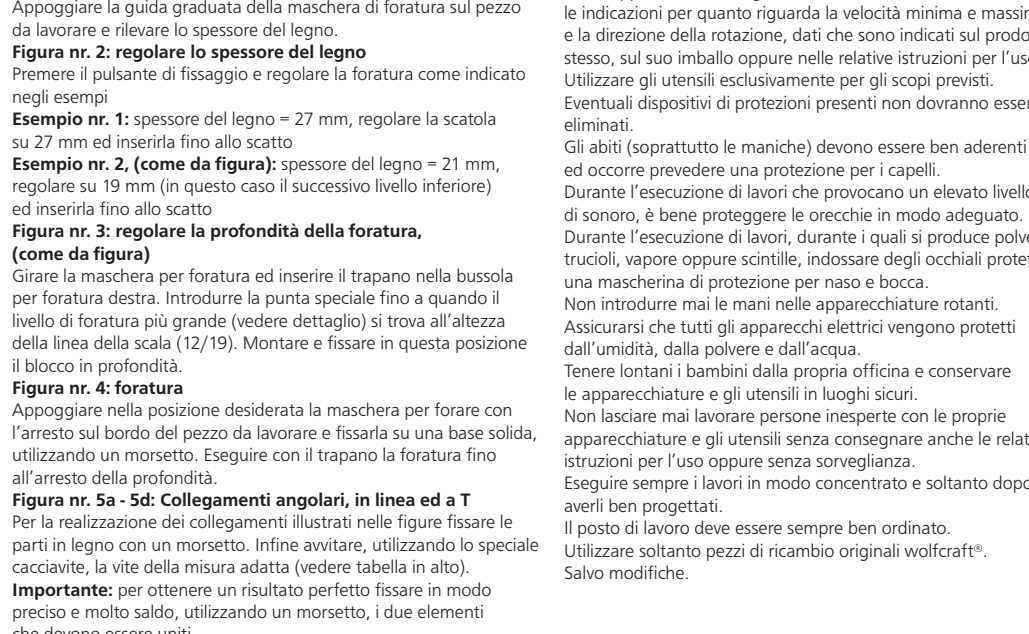


Figura 2a: Foratura
Figura 3a: Collegamenti angolari...

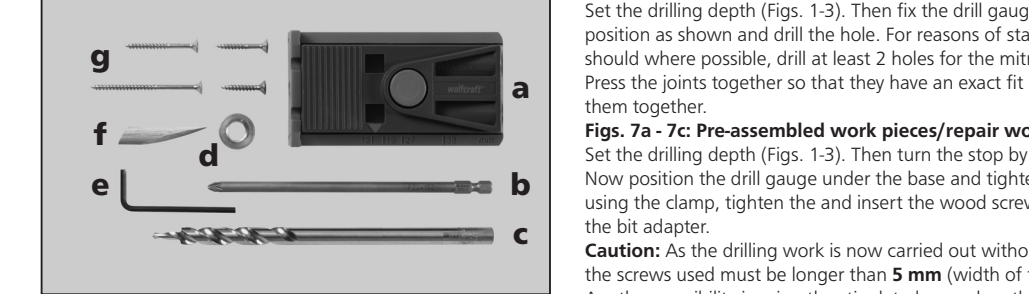


Fig. 6a - 6c: Mitre joints
Press the joints together so that they have an exact fit and screw them together.
Contento: a) 1x drill gauge b) 1x bit adapter c) 1x shouldered bit...

Table with 2 columns: Wood Thicknesses and Screw Sizes with various measurements.

Bedienungstext in German, including safety instructions and assembly steps for mitre joints.

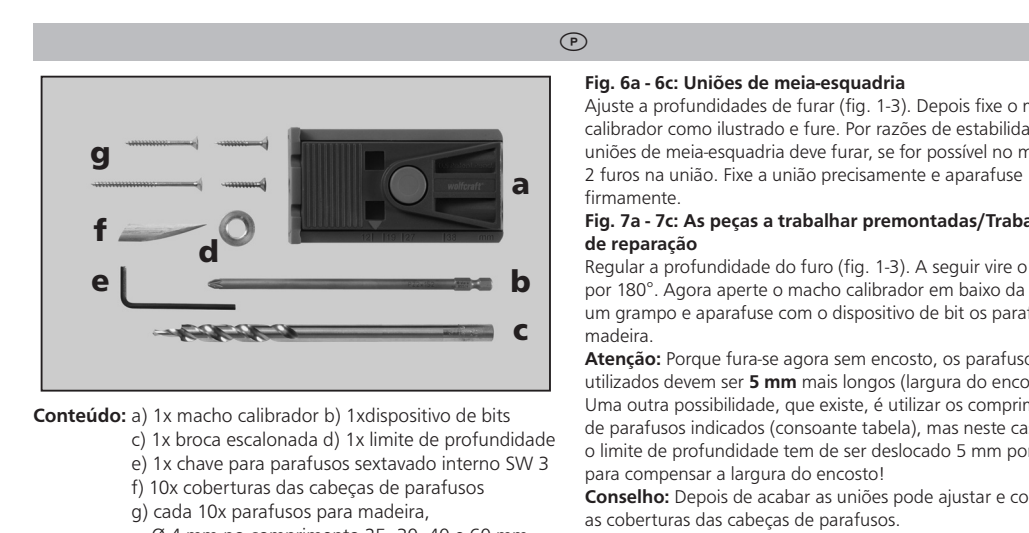


Fig. 6a - 6c: Uniãoes de meia-esquadra
Regular a profundidade do furo (fig. 1-3)...

Fig. 7a - 7c: As peças a trabalhar pre-montadas/Trabalhos de reparação
Regular a profundidade do furo (fig. 1-3)...

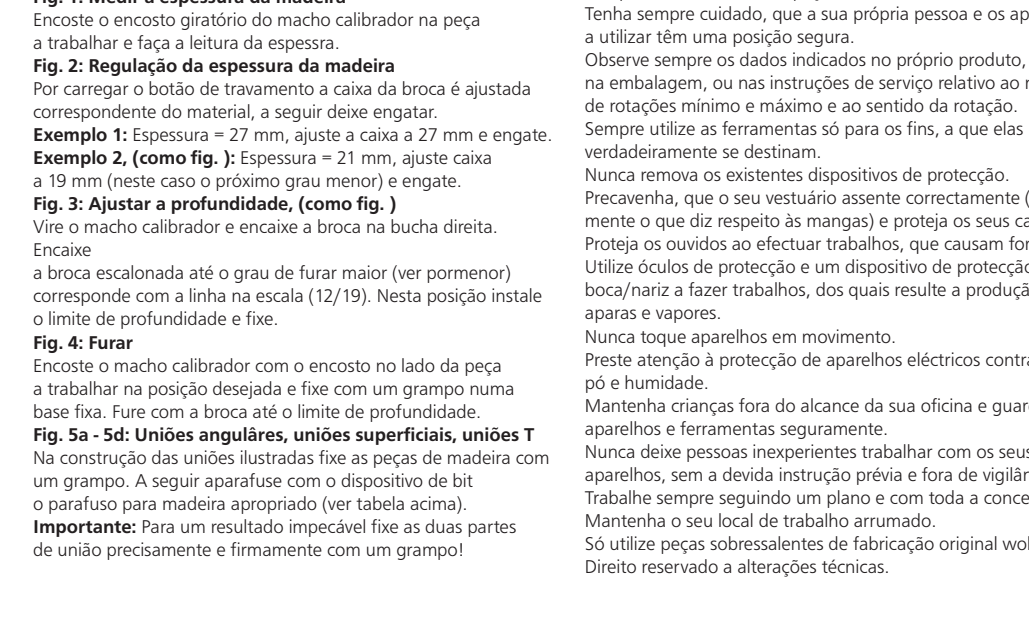
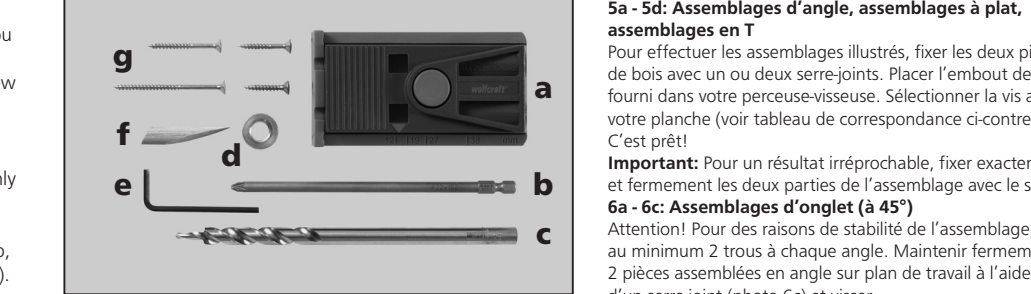


Fig. 2: Instalando a espessura da madeira
Fig. 3: Ajustar a profundidade...



5 - 6: Assembler par vissage
Sa - 5d: Assemblages d'angle, assemblages à plat...
Fig. 7a - 7c: Pre-assembled wood pieces/repair work...

Table with 2 columns: Epaisseur du bois (wood thickness) and Taille des vis à choisir (screw size) with various measurements.

Bedienungstext in German, including safety instructions and assembly steps for angle joints.



Fig. 6a - 6c: Geringsamlinger
Karrusskýrypyy asettajan (kuva 1-3)...

Fig. 7a - 7c: Förmonterade arbetsstycken/reparationsarbete
Indstilt boretningen (fig. 1-3)...

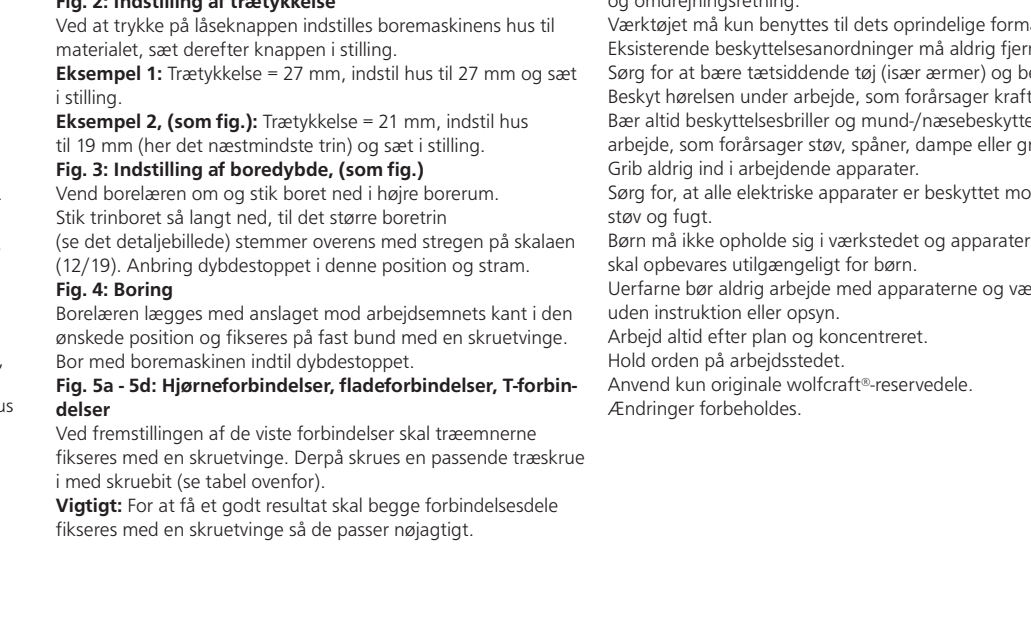


Fig. 1: Måling af trætykkelse
Fig. 2: Indstilling af boretning...

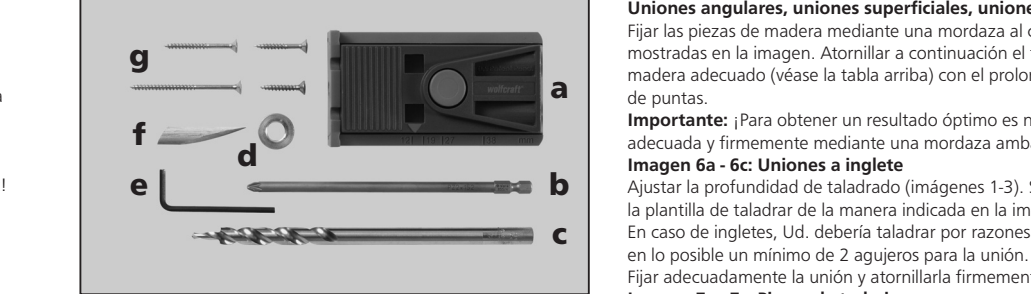


Fig. 6a - 6c: Geringsamlinger
Karrusskýrypyy asettajan (kuva 1-3)...

Fig. 7a - 7c: Förmonterade arbetsstycken/reparationsarbete
Indstilt boretningen (fig. 1-3)...

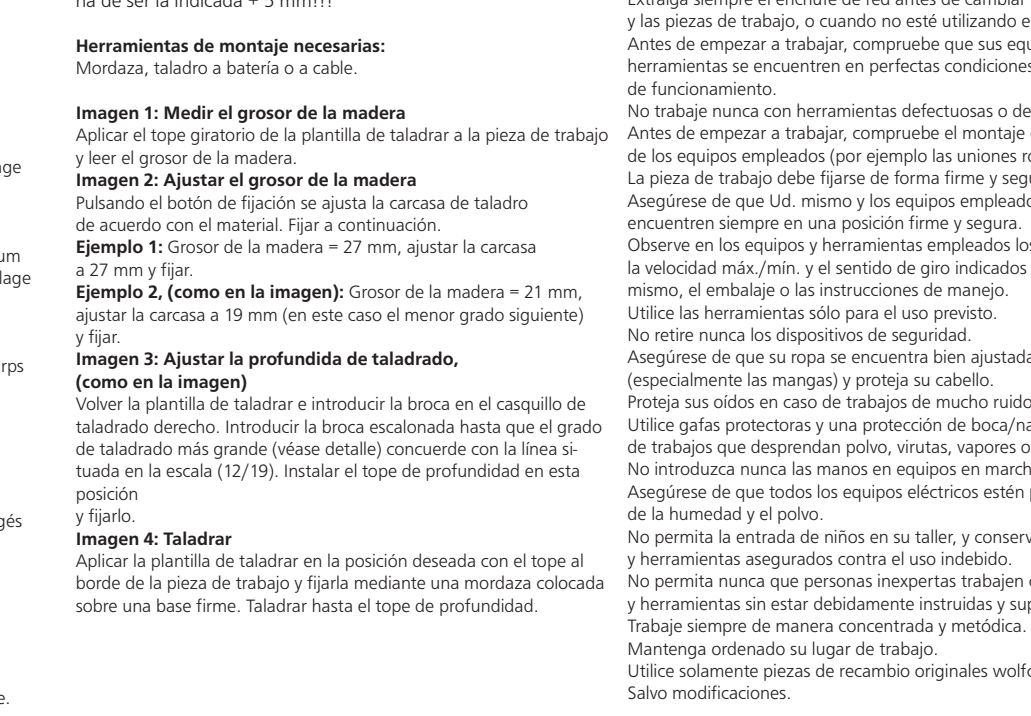


Fig. 2: Instalando a espessura da madeira
Fig. 3: Ajustar a profundidade...

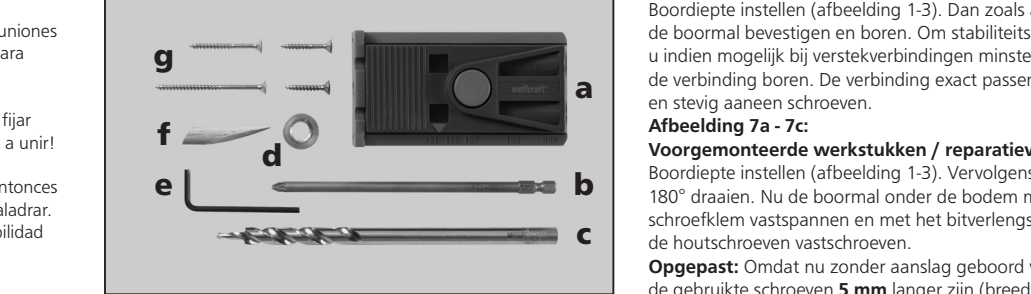


Bild 6a - 6c: Versteckverbindungen
Boordteile einstellen (Abbildung 1.3)...

Bild 7a - 7c: Voorgeassembleerde werkstukken/ reparatiewerkzaamheden
Indstilt boretningen (fig. 1-3)...

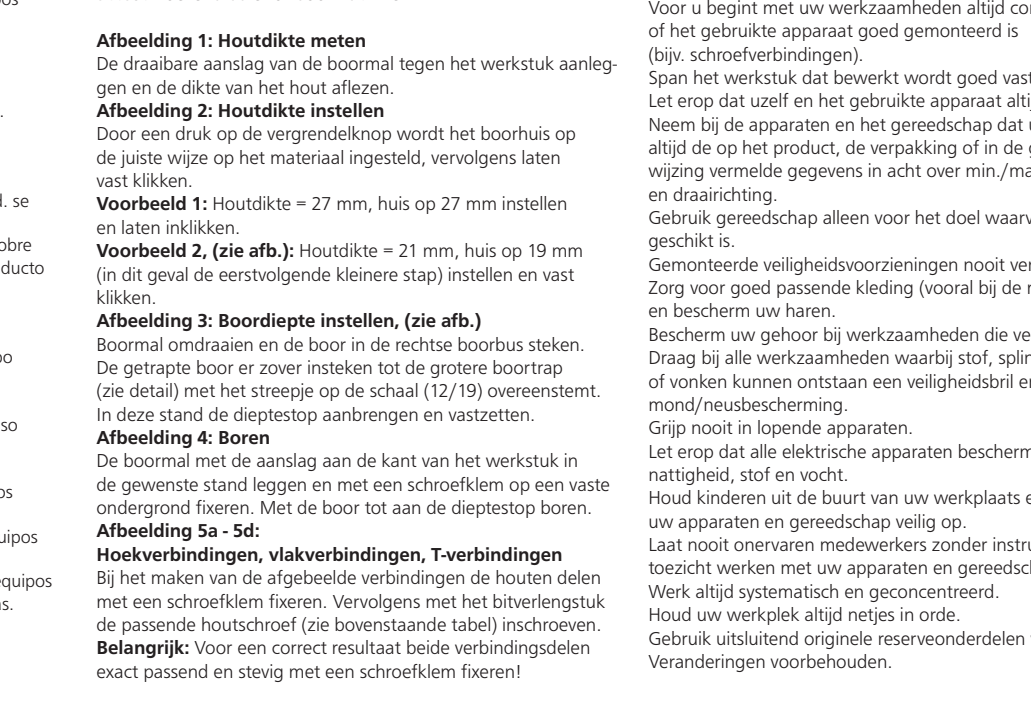


Fig. 2: Instalando a espessura da madeira
Fig. 3: Ajustar a profundidade...

