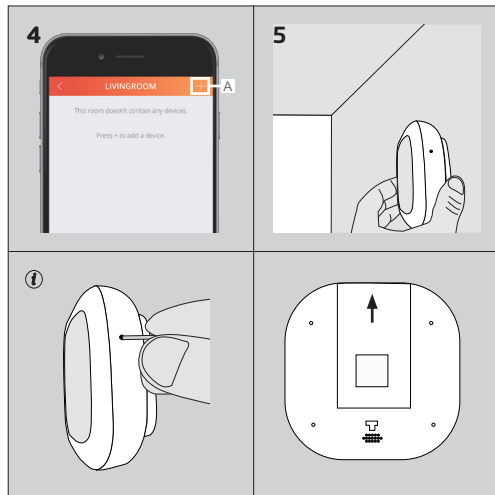
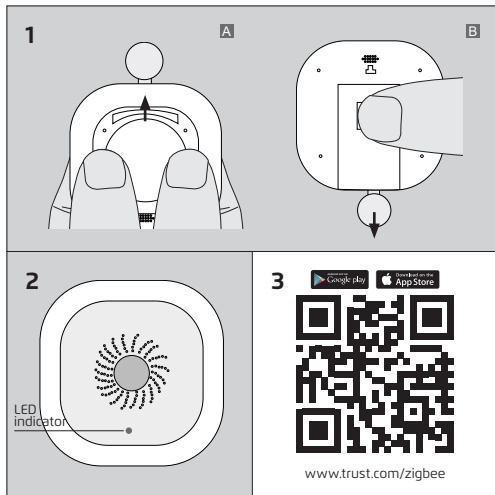


USER MANUAL

TEMPERATURE AND HUMIDITY SENSOR ZTHS-100



Item 71247 Version 1.0
Visit www.trust.com/71247 for the latest instructions



COMPATIBILITY

The Temperature and Humidity sensor works with the Z1 ZigBee Bridge and the ICS-2000. **NOTE:** For receiving push notifications, a fully working internet connection is required.

1. (RE)PLACE THE BATTERIES

- A** Remove the backplate by sliding it from the sensor.
- B** Hold the battery cover tightly and remove the battery pull strip by pulling it from the sensor.

2. INDICATORS

The sensor contains a LED indicator to show the status of the sensor. Please see below the meaning of the different LED indications.

LED FUNCTION TABLE

Connection mode	LED will flash fast for 1 min.
Connected successfully	LED will light up for 3 sec (The App will also indicate when the connection is successful)
Sensor reset	LED will flash 6x

3. DOWNLOAD APP

To connect the sensor with a Z1 ZigBee bridge or ICS-2000, first get the App by scanning the QR code or go to trust.com/zigbee and install it.

4. CONNECT SENSOR

A In the App, select a room, press the + button and choose Zigbee (Trust Smart Home)/ Temperature and Humidity sensor and follow the instructions. For manual set up of push-notifications go to the rules tab, press the + button and select notification wizard.

5. MOUNT THE SENSOR

A Remove the plastic layer from the double sided-tape on the back of the sensor and place it on a flat service.

RESET SENSOR AND ACTIVATE CONNECT MODE

Warning: This step will disconnect the sensor from the Z1 Zigbee Bridge or the ICS-2000. To reset the sensor press the button in the hole (with the included pin) at the side for approximately 5 sec with the included pin. The LED will flash 6x to confirm the reset.

Activate connect mode: After resetting the sensor you can activate the connect mode by pressing the button in the hole on the side for approx. 2 sec. The LED will flash fast for 1 minute to indicate the connection mode.

